



MARK II R/C

# MERCO

SIXTY-ONE R/C

RETAIL PRICE R/C TWIN AND  
R/C SINGLE PLUG HEAD . . . **\$44.95**

CAPACITY 0.61 cu. in., 10 cc  
BORE .940" STROKE .875"  
WEIGHT 13 OUNCES  
POWER EXCEEDS 1 B.H.P. AT  
13,000 RPM

RPM RANGE ON THROTTLE CONTROL  
2,000-14,000

- PRESSURE DIECAST\*CRANKCASE  
IN LM6 ALLOY
- ALUMINUM PISTON WITH TWO  
PISTON RINGS
- CRANKSHAFT RUNNING IN TWO  
HIGH-SPEED BALL BEARINGS
- BRUTE POWER AND SMOOTH  
THROTTLE CONTROL ACCELE-  
RATION UNEQUALLED

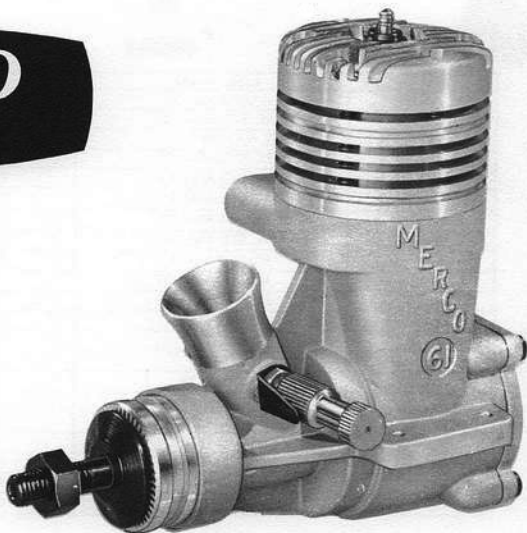
# MERCO

SIXTY-ONE STD.

RETAIL PRICE . . . . **\$39.95**

CAPACITY 0.61 cu. in., 10 cc  
BORE .940" STROKE .875"  
WEIGHT 12 OUNCES  
POWER EXCEEDS 1 B.H.P. AT  
13,000 RPM

- SAME AS MERCO .61 R/C ENGINE
- HIGHLY FINISHED WORKING PARTS  
BEAUTIFULLY CLEAN CASTINGS
- WORKMANSHIP IS OF THE HIGHEST
- OUTSTANDING EASE OF STARTING



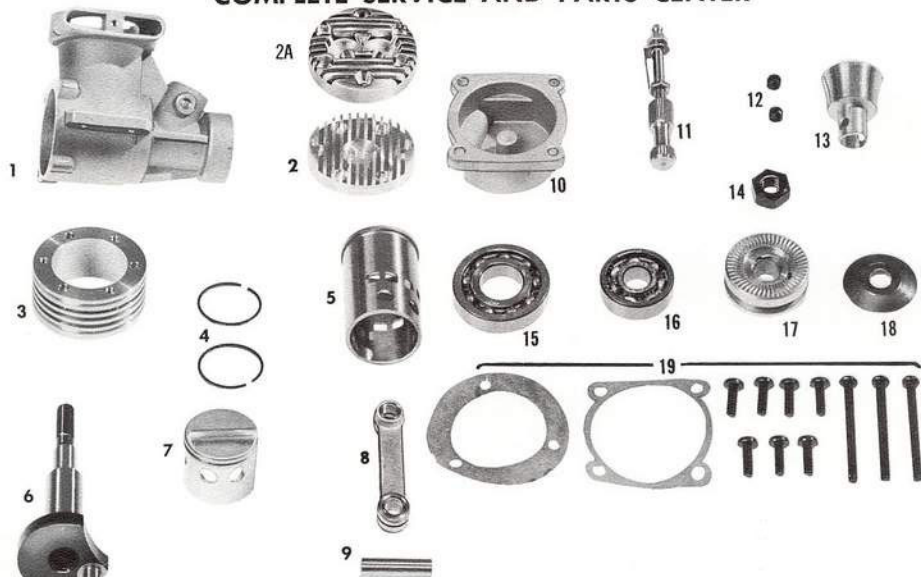
MARK II STD.

MERCO'S ARE WORLD RENOWN FOR USEABLE POWER



# MERCO 61 R/C + STD ENGINES

COMPLETE SERVICE AND PARTS CENTER



ID.	ORDER NUMBER	DESCRIPTION	PRICE
1	RC-STD-M61-01	CRANKCASE	\$ 7.65
2	RC-STD-M61-02	(SINGLE) CYLINDER HEAD	4.85
2A	R-M61-2A	(DOUBLE) CYLINDER HEAD	5.50
3	RC-STD-M61-03	CYLINDER FINS	2.80
4	RC-STD-M61-04	PR. PISTON RINGS	2.15
5	RC-STD-M61-05	SLEEVE CYLINDER	5.85
6	RC-STD-M61-06	CRANKSHAFT	5.55
7	RC-STD-M61-07	PISTON	4.15
8	RC-STD-M61-08	CONNECTING ROD	2.60
9	RC-STD-M61-09	WRIST PIN	1.25
10	RC-STD-M61-10	BACKPLATE	1.00
11	RC-M61-11	R/C N. V. ASS.	1.35
11	STD-M61-11	STD. N. V. ASS.	1.35
12	RC-M61-12	GRUB SCREWS	0.20
13	STD-M61-13	VENTURI	1.40
14	RC-STD-M61-14	PROP NUT	0.25
15	RC-STD-M61-15	BACK BALL BEARING	1.90
16	RC-STD-M61-16	FRONT BALL BEARING	1.65
17	RC-STD-M61-17	PROP DRIVER/COLLET	1.55
18	RC-STD-M61-18	PROP WASHER	0.30
19	RC-STD-M61-19	GASKET AND SCREW SET	0.75

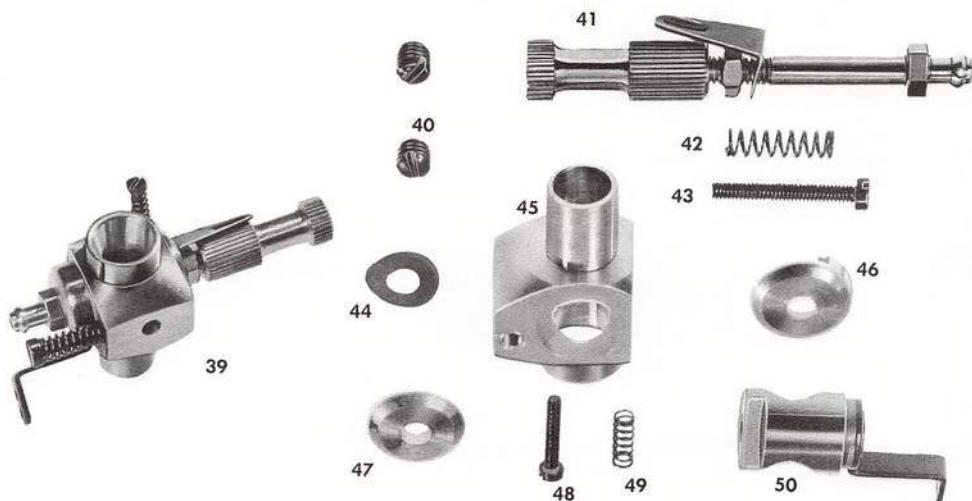


MERCO PARTS PRECEDED BY STD-M61 STANDARD ENGINES ONLY.  
 MERCO PARTS PRECEDED BY RC-M61 RIC ENGINE ONLY.  
 MERCO PARTS PRECEDED BY RC-STD-M61 UNIVERSAL TO BOTH ENGINES.

# MERCO

R/C THROTTLE CONTROL  
UNIVERSAL TO .29 - .61 ENGINES

Barrel type control with fixed needle-valve assembly. Throttle stop and slow-speed air-bleed valve adjustments, give easily adjusted and perfect low end speed range to your Merco R/C engine. The exhaust restrictor coupled to the throttle control giving additional low speed idle. Light mechanical loading on the throttle and exhaust, enables engine control to be worked satisfactorily with minimum effort and battery drain.



ID.	ORDER NUMBER	DESCRIPTION	PRICE
39	RC-M29-61-39	THROTTLE COMPLETE	\$5.45
40	RC-M29-61-40	GRUB SCREWS	0.20
41	RC-M29-61-41	R. C. N. V. ASS.	1.35
42	RC-M29-61-42	AIR BLEED SPRING	0.30
43	RC-M29-61-43	AIR BLEED SCREW	0.30
44	RC-M29-61-44	SPRING WASHER	0.15
45	RC-M29-61-45	THROTTLE BODY	2.45
46	RC-M29-61-46	END CAP CUT-AWAY	0.50
47	RC-M29-61-47	END CAP PLAIN	0.35
48	RC-M29-61-48	THROTTLE STOP SCREW	0.25
49	RC-M29-61-49	THROTTLE STOP SPRING	0.25
50	RC-M29-61-50	BARREL AND LEVER	1.65

